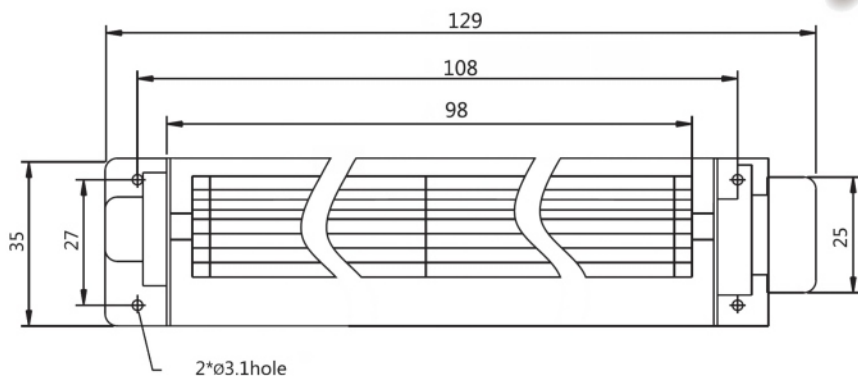
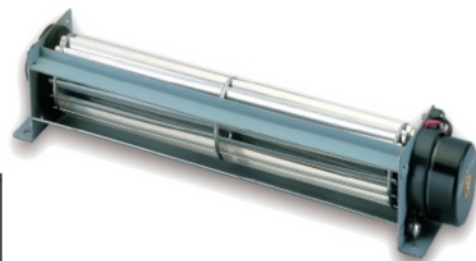


M2509 Series

DC CROSS FLOW FAN 129x30x38mm

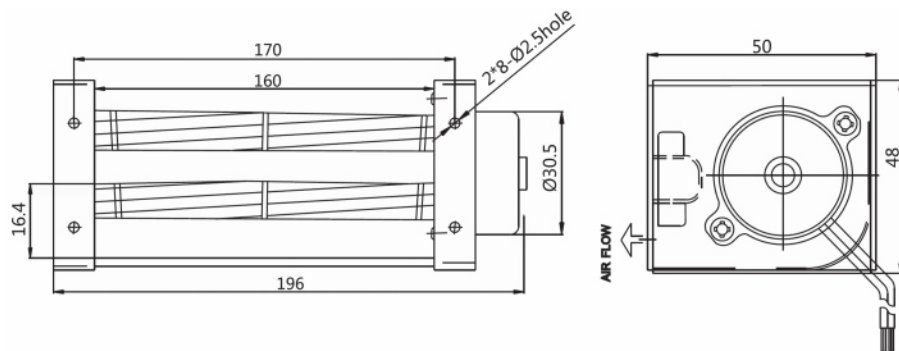


另有长度不同可选产品：191x30x38---M2515HD1、229x30x38---M2519HD1

Model (型号)	Bearing System (轴承)	Rated Voltage (电压) [V]	Voltage Range (电压范围) [V]	Current (电流) [A]	Speed (转速) [RPM]	Maximum Air Flow (风量) [CFM]	Maximum Air Flow (风量) [m³/min]	Max. Static Pressure (静压) [InH₂O]	Max. Static Pressure (静压) [Pa]	Noise Level (噪音) [dB-A]	Mass (质量) [g]
M2509HD1	Ball	12	6.0~13.6	0.09	4000	6.56	0.28	0.075	19	35	80

M3015 Series

DC CROSS FLOW FAN 196x50x48mm



另有长度不同可选产品：134x50x48---M3009HD1/D2、234x50x48---M3019HD1/D2、336x50x48---M3029HD1/D2

Model (型号)	Bearing System (轴承)	Rated Voltage (电压) [V]	Voltage Range (电压范围) [V]	Current (电流) [A]	Speed (转速) [RPM]	Maximum Air Flow (风量) [CFM]	Maximum Air Flow (风量) [m³/min]	Max. Static Pressure (静压) [InH₂O]	Max. Static Pressure (静压) [Pa]	Noise Level (噪音) [dB-A]	Mass (质量) [g]
M3015HD1	Ball	12	6.0~13.5	0.15	3100	31	0.88	0.071	18	35	210
M3015HD2	Ball	24	18.0~26.5	0.14	3100	31	0.88	0.071	18	35	210