

# M280 Series

## EC Centrifugal Fan Ø280 x 115 mm



Impeller : Made of Aluminum

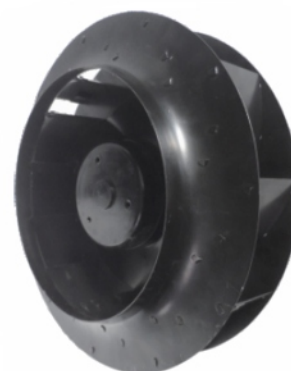
風輪: 铝

Frame : Made of die-cast Aluminum

外框: 压铸铝合金

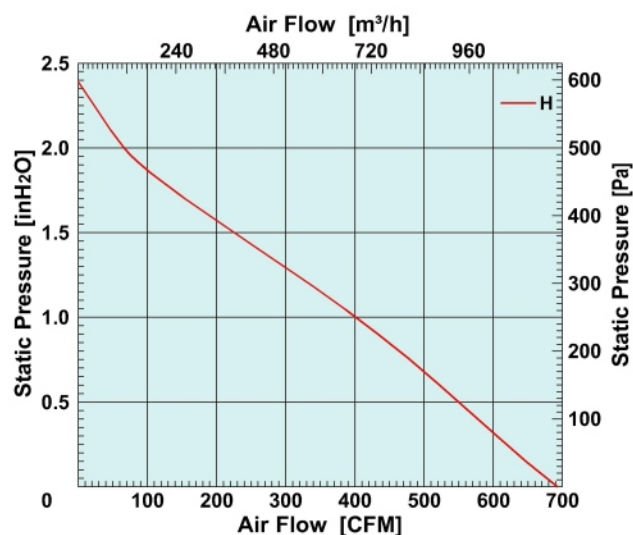
Motor : 8 Poles brushless DC motor

電機: 8极无刷直流

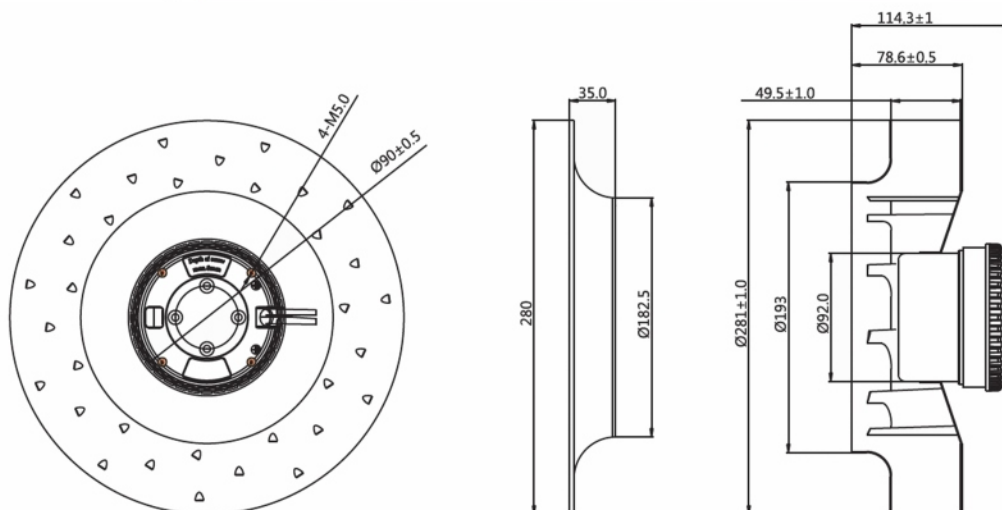


Model (型号)	Bearing System (轴承)	Rated Voltage (电压) [VAC]	Voltage Range (电压范围) [VAC]	Freq. (频率) [Hz]	Input Power (功率) [W]	Speed (转速) [RPM]	Maximum Air Flow (风量) [CFM]	Maximum Air Flow (风量) [m³/h]	Max. Static Pressure (静压) [InH <sub>2</sub> O]	Max. Static Pressure (静压) [Pa]	Niose Level (噪音) [dB-A]	Mass (质量) [g]
M280HE2	Ball	220	100~240	50/60	130	2200	692.4	1176.6	2.39	595.1	65	2400

### Air Flow and Static Pressure



### Dimensions Drawing



Above specification is only for reference and subject to change without notice.

以上数据仅供参考，如有变更恕不另行通知。